



SANDERSON
COUNTRY HOUSE

DIGITAL DESIGN BOOK



BY APPOINTMENT TO HER MAJESTY THE QUEEN
SUPPLIERS OF WALL PAPERS, PRINTS & FABRICS
ARTHUR SANDERSON AND SONS ENGLAND

SANDERSON

COUNTRY HOUSE

IN A CLASSIC DECORATING STORY, COUNTRY HOUSE UNVEILS THE RICHNESS AND TIMELESSNESS OF BELOVED FABRIC DESIGNS, CELEBRATING THE UNIQUE HISTORY OF SANDERSON.

Sanderson's Country House collection is a testament to the enduring charm and captivating beauty of classic decorating. This timeless collection features beloved fabric designs and iconic prints, each with a unique story.

Hand-selected designs from the illustrious Sanderson archive make a statement of elegance in a story of texture that pairs iconic florals with plaids. Many of the prints that form the Country House collection were originally block printed, adding to the authentic look and the layers of legacy that can be built into design schemes.

A rich colour palette blended with neutral tones, decorative embroideries and archival prints, including Jacobean and block-printed chinoiseries, lends a nod to the Arts & Crafts movement. At the same time, Baroque trellises and robust plaids juxtapose recognisable florals for an exuberant range of designs.

Presenting wools, linens, and cotton, this collection celebrates Sanderson's history and the provenance of the designs through texture and design, layering designs for the ultimate country house feel.

Inspired by a late 19th-century block printed document from the archive, the archival Abbeville takes its place in Country House as a fine example of the engagement with flora and fauna and a touch of the exotic of the time. Josette and Aesop's Fables delight as pastoral toiles on linen, offer a soft, relaxed and comforting design. Not forgetting the smart geometric of the Baroque Trellis, inspired by the ceilings of the early 17th-century Baroque period.

Comprising 24 iconic Sanderson designs, the country house is restored to glory in layers of embroideries, chintzes and archival prints, with various scales and colours coming together to create timeless, textural designs in Country House.

@sanderson1860 | sanderson.sandersondesigngroup.com



ABBEVILLE

Breathtakingly beautiful, this fantastical trailing fabric design was inspired by a late 19th-century block-printed document from the archive. The Tree of Life combines coffee beans, pomegranates, and exotic pheasants, bringing the garden into your home.



Abbeville

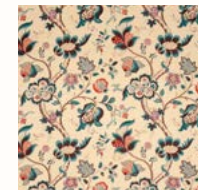
223968



Annandale Weave 236465



Annandale Weave 236464



Roslyn DVIPRO205

AMELIA ROSE

Vintage in feel and printed in fresh colourways, this all-over distressed floral linen-mix fabric design is a beautiful choice for accent pieces of furniture or curtains.





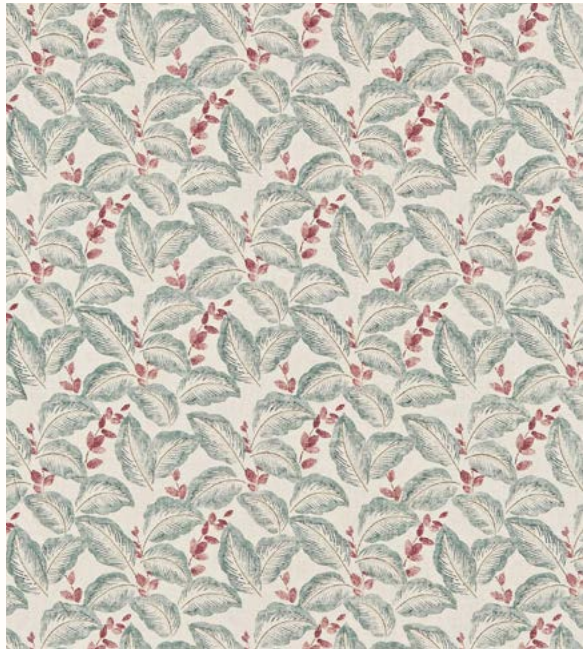
SHALIMAR

A bold, tree of life linen or velvet fabric design with exuberant trailing flora and fauna in subtle colourways. Team with the wallpaper of the same name in living rooms and bedrooms.



BOX HILL

A gentle, scattered pattern of soft block-printed leaves coordinates with the wallpaper of the same name and is an upholstery and curtain fabric that brings gentle elegance to a room.



Box Hill

222091



COUNTRY HOUSE PRINTS



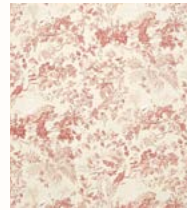
Abbeville 223968



Abbeville 223969



Abbeville 223970



Aesops Fables
DCAVAE201



Amanpuri
DCOUAM203



Amelia Rose 223977



Amelia Rose 223978



Amelia Rose 223979



Annandale 226372



Annandale 226373



Annandale 226374



Box Hill 222088



Box Hill 222091



Caverley
DCAVCA203



Chelsea
DKHIC2205



Courtney 226382



Giselle 223982



Josette 223985



Lyon 223972



Roslyn
DVI PRO205



Shalimar 226320



Shalimar 226321



Sissinghurst 222079



Solaine 223975

COUNTRY HOUSE WEAVES



Angelique 233995



Angelique 233996



Angelique 233997



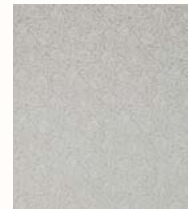
Annandale
Weave 236464



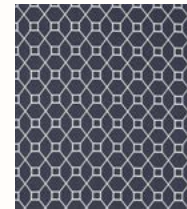
Annandale
Weave 236465



Annandale
Weave 236466



Annandale
Weave 236467



Baroque
Trellis 236356



Baroque
Trellis 236357



Baroque
Trellis 236360



Byron 233240



Byron 233241



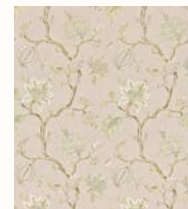
Byron 233243



Byron 233244



Clovelly 232052



Hadham 232093



Hadham 232094



SANDERSON

ICARIA & BOHO VELVETS

DIGITAL DESIGN BOOK



BY APPOINTMENT TO HM QUEEN ELIZABETH II
SUPPLIERS OF WALLPAPERS, PRINTS & FABRICS
ARTHUR SANDERSON AND SONS ENGLAND

SANDERSON

ICARIA & BOHO VELVETS

CLASSIC JEWEL COLOURS MEET NEW, TEMPTINGLY SOFT SHADES IN ICARIA & BOHO VELVETS AS SANDERSON REVEALS A PALETTE OF NEW COLOURS FOR AW24.

Sanderson is delving into the velvet archives, bringing the much-loved textures of Icaria and Boho velvets to the fore in delightful new colourways.

Classic jewel tones meet softer, calmer hues for interior schemes that range from quietly classic to contemporary luxury. Porcelain Blue, Seafoam and Coral suit the soft tactility of one velvet, while the deepest Marine and indulgent Chocolate enhance the textural beauty of the other.

Icaria's quality and compelling texture are highlighted in deep Blackcurrant and Indigo, to name a few. This plush cloth is crafted from two fibres in a cut pile effect, which causes irregularity on the surface pile to enhance the textural effect. This irregular strie plays with light and shade, with the fabric dye reacting differently on each fibre, creating a tactile velvet with a wonderful drape.

On the other hand, Boho Velvets delves into a softer series of shades, with Conch and Tyrian Lilac revealing a fresh, pastel take on a luxuriously soft, drapery fabric.

Rebecca Craig, Lead Designer at Sanderson, says, "Revisiting Icaria & Boho Velvets is all about taking these adored fabrics, loved for their textural quality, and adding to our palette colours that feel instinctively in tune with contemporary interiors. Whether designing a scheme for a country house or modern apartment setting, Icaria & Boho Velvets, with the addition of softer, calmer hues, blend beautifully in a multitude of interior design projects."

Icaria & Boho Velvets embrace the spectrum of colour, from earthy and tonal to rich and intense, layered into schemes for timeless interiors that portray beautiful, elevated decorating stories.

@sanderson1860 | sanderson.sandersondesigngroup.com



BOHO VELVET

A sumptuous viscose cotton velvet, Boho is visually decadent with a lovely soft textured handle and beautiful drape quality. This luxurious fabric is extremely hardwearing and can be used confidently for contract furniture.



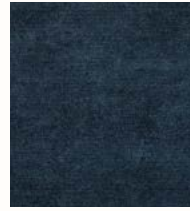
BOHO VELVETS



Boho Velvets 235261



Boho Velvets 235262



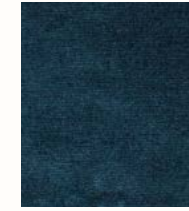
Boho Velvets 235269



Boho Velvets 235270



Boho Velvets 235271



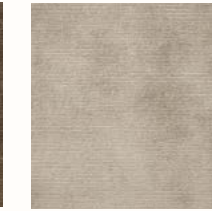
Boho Velvets 235272



Boho Velvets 235274



Boho Velvets 235279



Boho Velvets 235280



Boho Velvets 235281



Boho Velvets 237438



Boho Velvets 237439



Boho Velvets 237440



Boho Velvets 237441



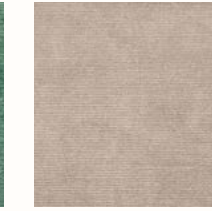
Boho Velvets 237442



Boho Velvets 237443



Boho Velvets 237444



Boho Velvets 237445



Boho Velvets 237446



Boho Velvets 237447

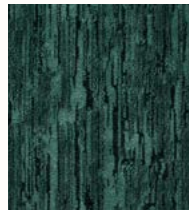


Boho Velvets 237448

ICARIA VELVETS



Icaria 232918



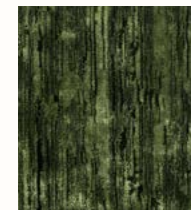
Icaria 232919



Icaria 232920



Icaria 232924



Icaria 232925



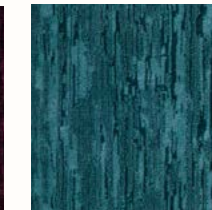
Icaria 232926



Icaria 232928



Icaria 232929



Icaria 232930



Icaria 232931



Icaria 232932



Icaria 237460



Icaria 237461



Icaria 237462



Icaria 237463



Icaria 237464



SANDERSON

LYMINGTON DAMASKS & STRIPES

DIGITAL DESIGN BOOK



BY APPOINTMENT TO HM QUEEN ELIZABETH II
SUPPLIERS OF WALLPAPERS, PAPERES & FABRICS
ARTHUR SANDERSON AND SONS ENGLAND

SANDERSON

LYMINGTON DAMASKS & STRIPES

A SYMPHONY OF DAMASKS AND FLORALS PERVADES SANDERSON'S PORTFOLIO FOR AW24 WITH A COLLECTION OF CLASSICAL CONTRASTS IN LYMINGTON DAMASKS & STRIPES.

Stepping into Sanderson's history is a journey of timeless beauty. The Lymington Damasks & Stripes collection, with its fusion of the regal damask and the delicate florals, is a testament to our iconic designs. It's a new chapter in the book of interior design traditions, reassuring in its enduring appeal.

The damask is a much-adored classical design aesthetic, and as Sanderson embraces the design once more, opulent shades and tones take on new meaning in a timeless story of colour. Mid-Blue and Pale Linen sit alongside Raspberry, Claret, and Indigo, highlighting the details of the fabric.

Contrasting with the boldness of the Lymington designs, the Sorilla designs offer a softer, more muted aesthetic. The natural, lightweight quality of the Sorilla Damask and Sorilla Stripe infuse a sense of tranquility into any space. Whether in a country cottage or a contemporary setting, the Sorilla designs reflect Sanderson's love of classicism in Eggshell, Silver, and Delft shades.

This collection is a versatile ensemble where richly coloured damasks, floral interpretations, and signature stripes harmoniously coexist. A go-to for a wide range of interior schemes, Lymington Damasks & Stripes is a testament to Sanderson's appreciation for the relaxed country home, whether grand and opulent or quaint and sanctuary-like.

Comprising three fabric designs, Lymington Damask & Stripes soothes the soul.

@sanderson1860 | sanderson.sandersondesigngroup.com

LYMINGTON DAMASK

A classic damask pattern and a perennial favourite, this cotton-blend fabric is available in an array of colourways, including soft neutrals and rich tones. The design's medium scale and hard-wearing quality make it a perfect choice for both curtains and upholstery.





SORILLA DAMASK

One of Sanderson's most loved and recognisable designs, trailing lilac and rose blossoms, has been reinterpreted as a jacquard. Woven in linen mixed with cotton, this pattern has a lovely, tumbled feel and is suitable for curtains and upholstery.



SORILLA STRIPE

Sorilla Stripe is a linen stripe with a stitch effect running through it, suitable for curtains and upholstery.



LYMINGTON DAMASKS & STRIPES



Lymington Damask
DNLMLD302



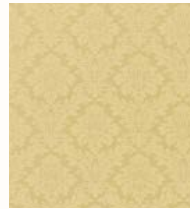
Lymington Damask
DNLMLD303



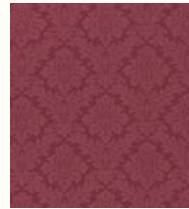
Lymington Damask
DNLMLD304



Lymington Damask
DNLMLD305



Lymington Damask
DNLMLD307



Lymington Damask
DNLMLD312



Lymington Damask
DNLMLD313



Lymington Damask
DNLMLD318



Lymington Damask
DNLMLD319



Lymington Damask
DNLMLD320



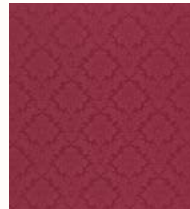
Lymington Damask
DLYM232604



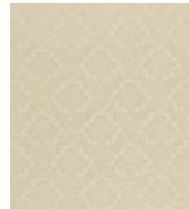
Lymington Damask
DLYM232605



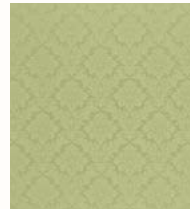
Lymington Damask
DLYM232606



Lymington Damask
DLYM232608



Lymington Damask
DLYM232609



Lymington Damask
DLYM232610



Lymington Damask
DLYM232617



Lymington Damask
DLYM232621



Lymington Damask
DLYM232625



Lymington Damask
DLYM232626



Sorilla Damask
DSOR234346



Sorilla Damask
DSOR234348



Sorilla Damask
DSOR234349



Sorilla Damask
DSOR234351



Sorilla Damask
DSOR234352



Sorilla Stripe
DSOR234354



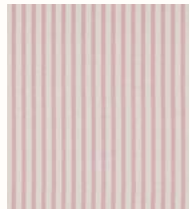
Sorilla Stripe
DSOR234356



Sorilla Stripe
DSOR234357



Sorilla Stripe
DSOR234359



Sorilla Stripe
DSOR234360

SANDERSON

CONTACT INFORMATION

LONDON SHOWROOM

Design Centre Chelsea Harbour, First Floor,
South Dome, Lots Road, London, SW10 0XE

Tel: + 44 203 903 3700

showroom@sandersondesigngroup.com

PARIS SHOWROOM

19 Rue Du Mail 75002 Paris, France

Tel: +44 (0)203 093 1840

NEW YORK SHOWROOM

D&D Building, 979 Third Avenue,
Suite 905, New York, NY 10022

Tel +1 212 319 7220

sales-ny@sandersondesigngroup.com

CHICAGO SHOWROOM

222 W Merchandise Mart Plaza,
Suite 6-117A, Chicago, IL 60654

Tel +1 312 929 2058

sales-chicago@sandersondesigngroup.com

NETHERLANDS SHOWROOM

ETC Licht & Interieur, Randweg 20,
4104 AC Culemborg

Tel: +31 65349 3696

international@sandersondesigngroup.com

GERMANY SHOWROOM

Kronenstrasse 4, 76133 Karlsruhe

Tel: +49 721 981 985 60

verkauf@sandersondesigngroup.com